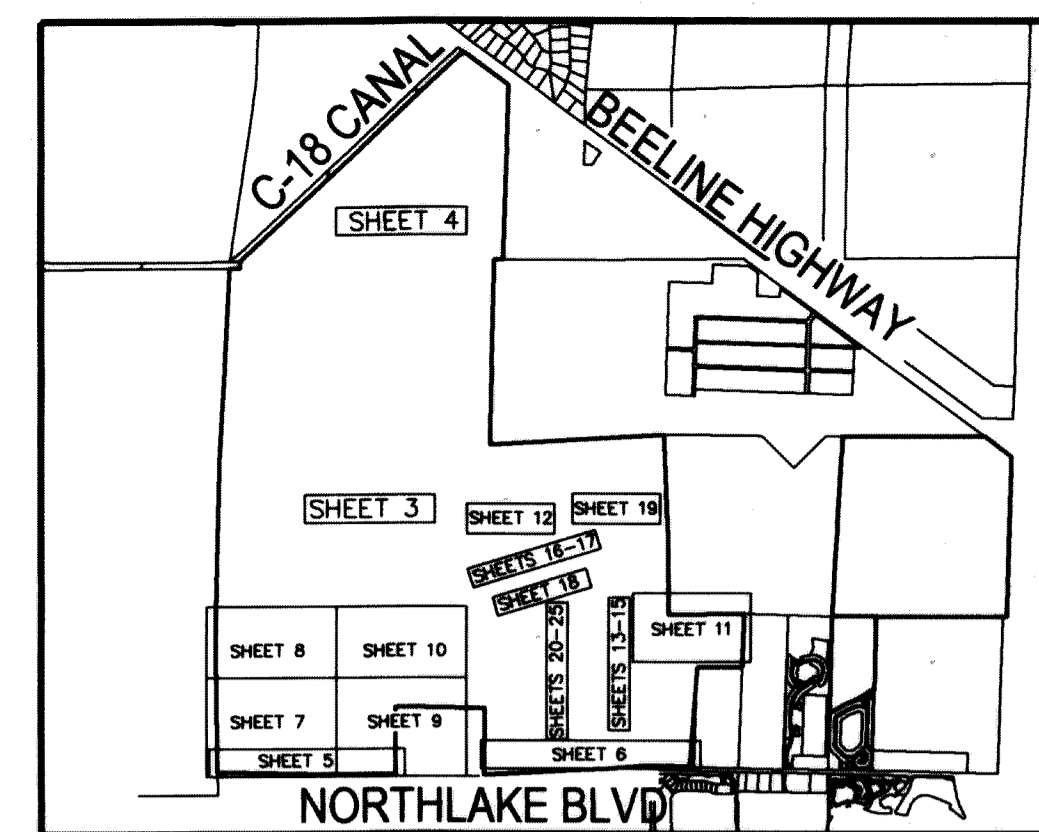


- LEGEND/ABBREVIATIONS**
- CL - CENTERLINE
  - Δ - DELTA (CENTRAL ANGLE)
  - AC - ACRES
  - AE - ACCESS EASEMENT
  - CB - CHORD BEARING
  - CD - CHORD DISTANCE
  - CDD - COMMUNITY DEVELOPMENT DISTRICT
  - DE - DRAINAGE EASEMENT
  - DB - DEED BOOK
  - ESMT - EASEMENT
  - L - ARC LENGTH
  - RBE - ROADWAY BUFFER EASEMENTS
  - LB - LICENSED BUSINESS
  - MON - MONUMENT
  - PB - PLAT BOOK
  - PG - PAGE
  - O.R.B. - OFFICIAL RECORD BOOK
  - FND PBC - FOUND PALM BEACH COUNTY SURVEY MONUMENT
  - PBG - PALM BEACH GARDENS
  - R - RADIUS
  - RB - RADIAL BEARING
  - RW - RIGHT-OF-WAY
  - SF - SQUARE FEET
  - S.F.W.M.D. - SOUTH FLORIDA WATER MANAGEMENT DISTRICT
  - SR - STATE ROAD
  - SUAE - SEACOAST UTILITY AUTHORITY EASEMENT
  - UE - UTILITY EASEMENT
  - PRM - DENOTES PERMANENT REFERENCE MONUMENT
  - 5/8" IRON ROD WITH CAP STAMPED "C&W PRM LB3591"
  - - DENOTES PERMANENT CONTROL POINT

# AVENIR

BEING A PORTION OF SECTIONS 28, 32, 33,  
TOWNSHIP 41 SOUTH, RANGE 41 EAST,  
TOGETHER WITH ALL OF SECTIONS 4, 9 AND 10,  
AND A PORTION OF SECTIONS 5, 8, 14, 15, 16 AND 17,  
TOWNSHIP 42 SOUTH, RANGE 41 EAST,  
CITY OF PALM BEACH GARDENS, PALM BEACH COUNTY, FLORIDA

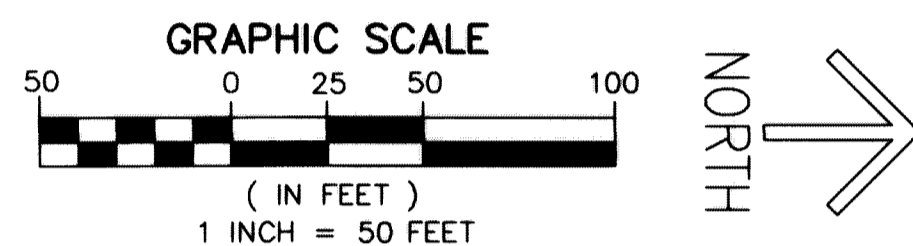
THIS INSTRUMENT PREPARED BY  
RONNIE L. FURNISS  
OF  
**CAULFIELD and WHEELER, INC.**  
SURVEYORS - ENGINEERS - PLANNERS  
7900 GLADES ROAD, SUITE 100  
BOCA RATON, FLORIDA 33434 - (561)392-1991  
CERTIFICATE OF AUTHORIZATION NO. LB3591  
NOVEMBER 2018



# 106

**SHEET 22 OF 25**

- SHEETS 1-2 COVER
- SHEETS 3-4 OVERALL SITE
- SHEETS 5-6 DETAIL SOUTH BOUNDARY
- SHEETS 7-10 DETAIL CONSERVATION AREAS
- SHEET 11 DETAIL PARCEL E/G
- PARK/CIVIC/RECREATION
- SHEET 12 DETAIL CITY ANNEX TRACT & PARCEL A-4
- SHEETS 13-18 DETAIL TRACT R1
- SHEET 19 DETAIL PARCEL C
- SHEETS 20-25 DETAIL TRACTS R2 & R3



SECTION 15  
TOWNSHIP 42 SOUTH  
RANGE 41 EAST  
**SEE SHEET 3 OF 25**

PARCEL A-1

PARCEL A-2

PARCEL C  
EDP  
ECONOMIC DEVELOPMENT  
PARCEL  
50.719 ACRES

**SHEET 19 OF 25**

**SEE SHEET 17 OF 25**

**MATCH LINE SHEET 23 OF 25**

SECTION 10  
TOWNSHIP 42 SOUTH  
RANGE 41 EAST

